

DLT Series COB LED Down Light

Description:

DLT series is gimbal downlight ,which til-table and rotatable, stack-effect heat sink which is sufficient of cooling ensure the long lifespan of the light , cutout free to give you a more elegant and nicer ceiling.

A compact design with superior thermal management makes this fixture perfect for any truly High-End commercial application.



Application:

- Shopping mall,jewelry shop and fashion store lighting.
- Art gallery,furniture,museum and showroom lighting .
- Gym, hotel, hospital and stage lighting.
- Food Lighting (Meat Fruit Vegetable Bread etc.)





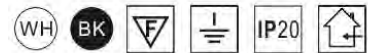
Information:

Features:

- Lighting Source: Original **CREE/CITIZEN COB LED**
- Available in >85,>90
- Dimming methods: Non dimmable, Triac/1-10V/DALI/Triac CCT switchable, CCT Changeable RF Dim, Vivid Color
- No need Cutout , surface mount install or hanging install.
- Strongly light up an object from far or high distance.
- Unique and compact design with perfect thermal management.

Specification:

- Power supply :standard with CE,TUV, SAA, CB certificated driver, 3-5 years warranty, Philips Driver
- Watts:20/25/30/35/40/45/50
- Power factor: >0.93.
- Color Temp.(Color) : 3000K 4000K 5000K Special Food
- Housing material: aluminum.
- Housing color: White/Black
- Working environment temperature: -20oc ~ +45oc.
- Lamp Certificates: CE ROSH SAA
- Driver Certificates : TUV CB UL CE ROSH SAA



Model number	Electrical parameters			Optical parameters				Physical parameter	
	Input voltage(V)	Power (w)	LED Chip	Luminous flux (lm) ± 100lm)	Beam angle(o)	CCT (K)	CRI	Dimension (mm)	Cutting hole(mm)
ML-DLT20W(PH)	AC200-240V	20W	Citizen	2000lm	15/24 38/ 60	3000 4000/5000	Ra>90	D138 H120mm	128mm
ML-DLT25W(PH)	AC200-240V	25W	Citizen	2550lm	15/24 38/ 60	3000 4000/5000	Ra>90	D138 H120mm	128mm
ML-DLT30W(PH)	AC200-240V	30W	Citizen	3000lm	15/24 38/ 60	3000 4000/5000	Ra>90	D165 H145mm	152mm
ML-DLT35W(PH)	AC200-240V	35W	Citizen	3300lm	15/24 38/ 60	3000 4000/5000	Ra>90	D165 H145mm	152mm
ML-DLT40W(PH)	AC200-240V	40W	Citizen	4000lm	15/24 38/ 60	3000 4000/5000	Ra>90	D190 H155mm	175mm
ML-DLT30W(ME) ML-DLT35W(ME) ML-DLT40W(ME) Food display	AC220-240V	30W 35W 40W	Tailor-made COB	2600LM 3100LM 3600LM	15/24 38/60	Meat Vegetable Fruit Bread Seafood	80+	D165 H145mm	152mm



360°




60°

360° rotate and 60° tilt outward

DLT series Downlight

5 Inch Downlight


Picture	Model	Driver	LED	Lumen (±200lm)	CCT&CRI	Dimension (mm)
	ML-DLT520W(PH)	PHILIPS driver Non-Dimmable	CITIZEN	1900lm	3000K 4000K Ra90 5000K	D1 H1 mm Cutout:
	ML-DLT525W(PH)	PHILIPS driver Non-Dimmable	CITIZEN	2400lm		D1 H mm Cutout:
	ML-DLT520W5ME)	PHILIPS driver Non-Dimmable	CITIZEN special customized	1600lm	ME:for meat VE:for vegetable BR:for bread FS:for fish	D138 H120mm Cutout: 128
	ML-DLT525W(ME)	Food lighting		2100lm		D138 H120mm Cutout: 128



6 Inch Downlight

Picture	Model	Driver	LED	Lumen (±200lm)	CCT&CRI	Dimension (mm)
	ML-DLT625W(PH)	PHILIPS driver Non-Dimmable	CITIZEN	2400lm	3000K 4000K Ra90 5000K	D165 H155mm Cutout: 155
	ML-DLT630W(PH)	PHILIPS driver Non-Dimmable	CITIZEN	2900lm		D165H155mm Cutout: 155
	ML-DLT635W(PH)	PHILIPS driver Non-Dimmable	CITIZEN	3400lm		D165 H155mm Cutout: 155
	ML-DLT625W(ME)	PHILIPS driver Non-Dimmable Food lighting	CITIZEN special customized	2100m	ME:for meat VE:for vegetable BR:for bread FS:for fish	D165 H155mm Cutout: 155
	ML-DLT630W(ME)			2600m		D165 H155mm Cutout: 155
	ML- DLT635W(ME)			3100lm		D165 H155mm Cutout: 155

7 Inch Downlight

Picture	Model	Driver	LED	Lumen (±200lm)	CCT&CRI	Dimension (mm)
	ML-DLT725W(PH)	PHILIPS driver Non-Dimmable	CITIZEN	2400lm	3000K 4000K Ra90 5000K	D190 H155mm Cutout: 175
	ML-DLT730W(PH)	PHILIPS driver Non-Dimmable	CITIZEN	2900lm		D190 H155mm Cutout: 175
	ML-DLT735W(PH)	PHILIPS driver Non-Dimmable	CITIZEN	3400lm		D190 H155mm Cutout: 175
	ML-DLT740W(PH)	PHILIPS driver Non-Dimmable	CITIZEN	3900lm		D190 H155mm Cutout: 175
	ML-DLT725W(ME)	PHILIPS driver Non-Dimmable Food lighting	CITIZEN special customized	2100lm	ME:for meat VE:for vegetable BR:for bread FS:for fish	D190 H155mm Cutout: 175
	ML-DLT730W(ME)			2600lm		D190 H155mm Cutout: 175
	ML- DLT735W(ME)			3100lm		D190 H155mm Cutout: 175
	ML-DLT740W(ME)			3600lm		D190 H155mm Cutout: 175

TLE Series LED Track Light

Description:

TLE series is a stylish Spotlight with a cylindrical clean design originally R&D by Opte, bringing a full range of watts 15W 20W 30W 40W to strongly illuminating an object from far or high distance.

Spot or flood lighting can be achieved by choosing a customized reflector inset from 15°, 24°, 38°, 60°.

It is Ideal for for your planned retrofit or new constructing, Creating tremendous energy saving at a extremely affordable price.



Application:

- Shopping mall, jewelry shop and fashion store lighting.
- Gallery, furniture, hardware, museum and showroom lighting .
- Gym, hotel, hospital and stage lighting.
- Food Lighting (Meat Fruit Vegetable Bread etc.)



Information:

Features:

- SDCM=3
- Class 2
- UGR less than 19
- Glare free design ,Comfortable illumination
- Excellent light quality
- No UV or IR radiation
- Housing in powder coated aluminium, Built-in driver in driver box.
- Lighting head pivots through 90° ,rotates through 355°
- Medium useful life > 50,000 hours (L80B50) at ambient temperature of 25 °C

Specification:

- Power supply : Lifud (3 Years Warranty) Philips (5 Years Warranty)
- Lighting Source: Original Citizen (90Ra+) CREE (80Ra+)
- Power factor: >0.93.
- Track adapter : 2/3 Wires (One Phase) 4 Wires(3 Phase European Standard)
- Working environment temperature: -20oc ~ +45oc.
- Lamp Certificates: CE ROHS SAA

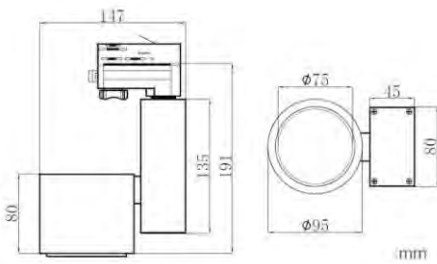


Model number	Electrical parameters			Optical parameters				Weight
	Input voltage(V)	Power (w)	LED Chip	Luminous flux (lm) (±5%)	Beam angle(o)	CCT (K)	CRI	Weight (kg)
ML-TLE15W	AC220-240V	15W	CREE /Citizen	1500LM	10/24 38/60	3000K 4000K 5000K	80+ 90+	0.9
ML-TLE20W	AC220-240V	20W	CREE /Citizen	2000LM	10/24 38/60	3000K 4000K 5000K	80+ 90+	0.9
ML-TLE30W	AC220-240V	30W	CREE /Citizen	3000LM	10/24 38/60	3000K 4000K 5000K	80+ 90+	1.35
ML-TLE35W	AC220-240V	35W	CREE /Citizen	3500LM	10/24 38/60	3000K 4000K 5000K	80+ 90+	1.35
ML-TLE40W	AC220-240V	40W	CREE /Citizen	4000LM	10/24 38/60	3000K 4000K 5000K	80+ 90+	1.58
ML-TLE30W ML-TLE35W ML-TLE40W Food display	AC220-240V	30W 35W 40W	Tailor-made COB	2600LM 3100LM 3600LM	10/24 38/60	Meat Vegetable Fruit Bread Seafood	80+ 97+	1.35

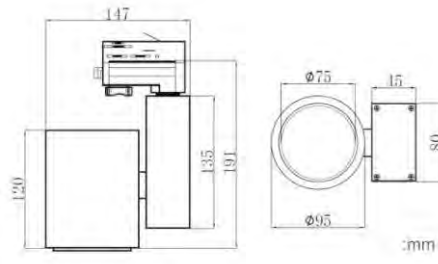
- ❖ Lumen output are based on 3000K CRI80+
- ❖ Triac Dimmable , 0-10V Dimmable, DALI Dimmable can be made if requested
- ❖ 100-277V can made if requested
- ❖ Food display track light is tailor-made for food section and is equipped with led module that is specially selected ant tested for illuminating such foods , it can be made other watts if requested



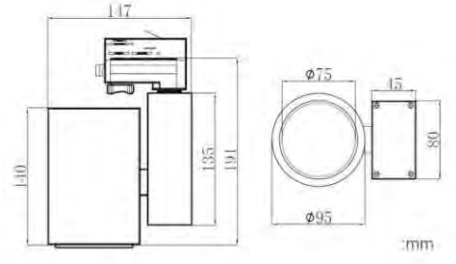
TLE series Track Light



A: TLE 15W 20W: H80mm



B: TLE 25W 30W: H120



C: TLE 40W: H140mm



3 types of lamp body



PHILIPS driver

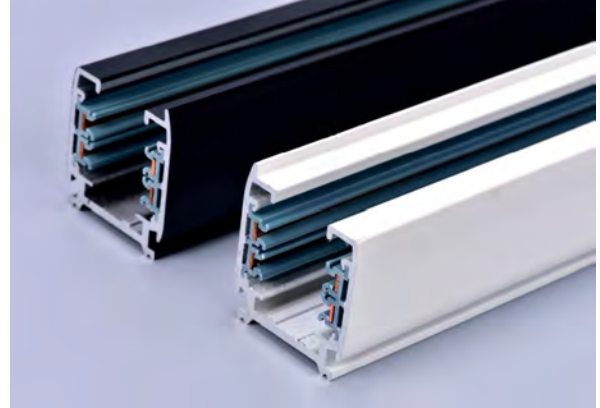
Model	Watts	Dimmable Type	LED	Adapter	Lumen (±200lm)	CCT&CRI	Housing type/ Dimension (mm)
ML-TLE15W(PH)	15W	NO-DIM (PHILIPS driver)	CITIZEN	2/3/4 wire	1500lm	3000k 4000k/5000K @ Ra90	D95 H80mm
ML-TLE20W(PH)	20W				2100lm		D95 H80mm
ML-TLE30W(PH)	30W				3000lm		D95 H120mm
ML-TLE35W(PH)	35W				3500lm		D95 H140mm
ML-TLE40W(PH)	40W				4000lm		D95 H140mm
ML-TLE30W(ME)	30W	NO-DIM (PHILIPS driver)	CITIZEN	2/3/4 wire	2600lm	ME:for meat VE:for vegetable BR:for bread FS:for fish	D95 H120mm
ML-TLE30W(ME)	35W				3100lm		D95 H140mm
ML-TLE40W(ME)	40W				3600lm		D95 H140mm



3 Phase(4 wires) Track Rail & Accessories

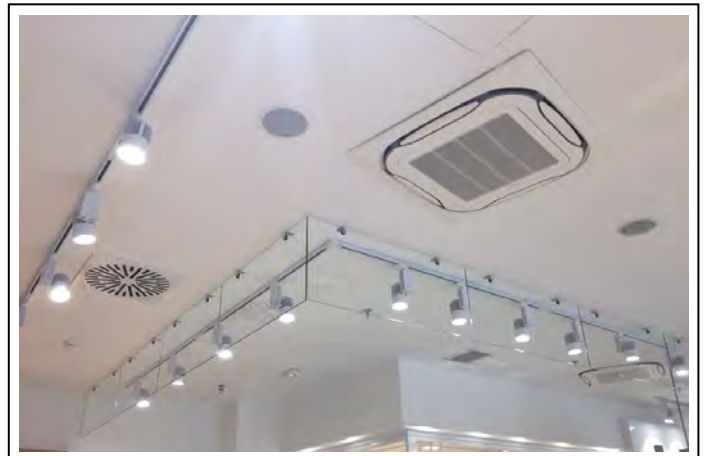
Description:

Square 3 phase(4 wires) Tracks Rails (Exterior-Mounted Type) were produced by professional production equipment We use the clip line method and the Compression method to make PVC and aluminum fixed more tightly. Its' SU 1 face coating has white color 1 and black color optional. Internal High strength and insulation PVC material. By using flat copper material for 1 conductor, we more improved connecting area, to achieve beautiful surface and high quality internal structure.



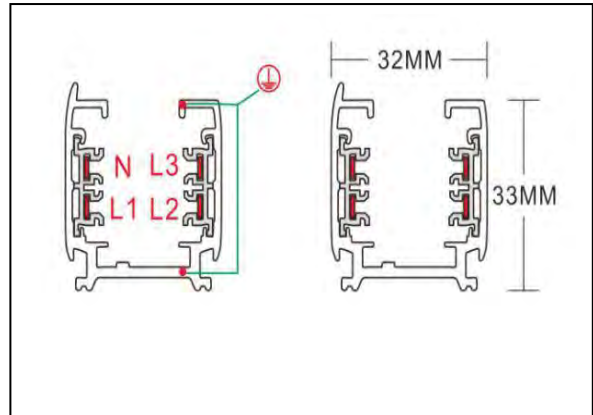
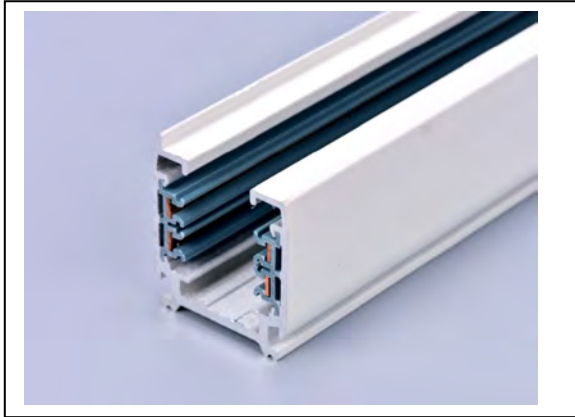
Application:

With Track Light for Shopping mall, Shop, Fashion Store, Showroom, Hotel, Gym, Supermarket...



Details:

Track Rail:

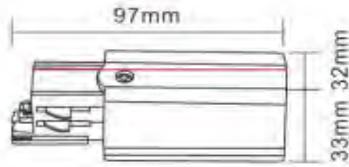


- * Exterior-Mounted Type
- * Aluminum: High Strength Aluminum
- * Plastic Strips: High Insulation PVC
- * Copper: Flat Copper
- * Length: 1Meter, 1.5Meter, 2Meter
- * Color: White/Black

Installation Structure Diagram:



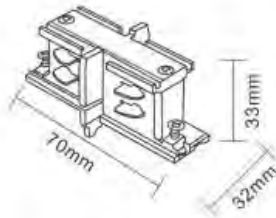
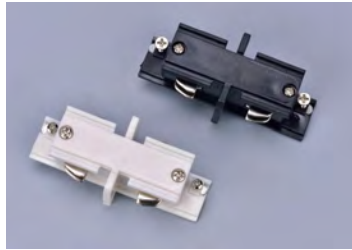
Accessories:



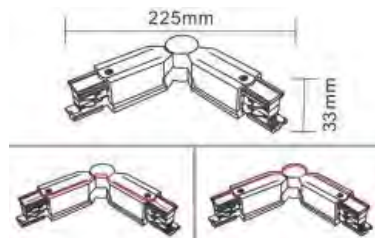
Live Cap
Plastic:PC
Color:Black/White



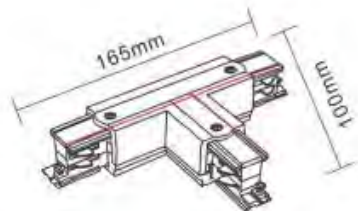
End Cap
Plastic:PC
Color:Black/White



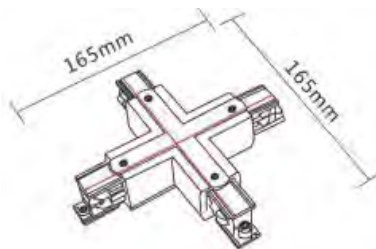
I-Coupler (inner)
Plastic:PC
Color:Black/White



L-Coupler
Plastic:PC
Color:Black/White

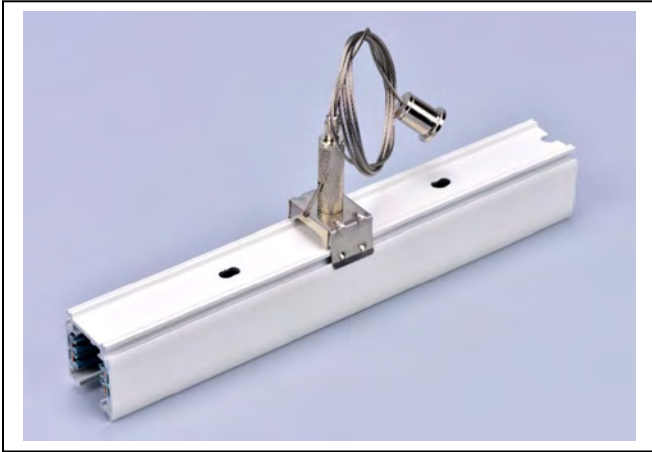


T-Coupler
Plastic:PC
Color:Black/White



X-Coupler
Plastic:PC
Color:Black/White

Suspending Fixture Set:



- *Hung up the rail
- *Wire Length 1.5Meter/PC, OR Customized
- *Each Rail need 2 sets
- *Adjustable

DLC Series COB LED Down Light

Description:

DLC series downlight with high lumen efficiency ,high CRI and uniform light beam angle ensuring the lighting requirements and lighting quality of shopping mall ,Hotel etc. It can adjust

A compact design with superior thermal management makes this fixture perfect for any truly High-End commercial application.

Application:

- Shopping mall,jewelry shop and fashion store lighting.
- Art gallery,furniture,museum and showroom lighting .
- Gym, hotel, hospital and stage lighting.
- Food Lighting (Meat Fruit Vegetable Bread etc.)



Information:

Features:

- Dia-casting Aluminum
- High Stoving varnished
- Efficient optical reflector
- Good heat sink system, high quality driver, DC connect
- Rubber protected spring, direction adjustable
- Strongly light up an object from far or high distance.
- Unique and compact design with perfect thermal management.

Specification:

- Power supply : Lifud(3 years warranty), Philips driver(5 years warranty)
- Lighting Source: Original CITIZEN COB LED, CRI RA>90
- Flicker free
- Dimmable: Triac DIM, DALI DIM, 1-10VDIM available
- Power factor: 6w/9w/12w PF=0.50, >12W, PF>0.92.
- Color Temp.(Color) : 3000K 4000K (RA>80), 5000K(RA>90)
- Housing material: aluminum.
- Housing color: White/black
- Working environment temperature: -20oc ~ +45oc.
- Lamp Certificates: CE ROHS SAA
- Driver Certificates : TUV CB UL CE ROHS SAA



Model number	Electrical parameters			Optical parameters				Physical parameter	
	Input voltage(V)	Power (w)	LED Chip	Luminous flux (lm) (±5%)	Beam angle(o)	CCT (K)	CRI	Size (mm)	Cutout(mm)
ML--DLC6W /9W	AC220-240V	6W/9W	CREE	100LM/W	30°	3000K 4000K 5000K	RA90	D95 H63 mm	Ø70mm
ML--DLC12W	AC220-240V	12W	CREE	100LM/W	30°	3000K 4000K 5000K	RA90	D111 H86 mm	Ø80mm
ML--DLC15W	AC220-240V	15W	CREE	100LM/W	24° 36°	3000K 4000K 5000K	RA90	D119 H103 mm	Ø90mm
ML--DLC20W/25W	AC220-240V	20W 25W	CREE	100LM/W	24° 60°	3000K 4000K 5000K	RA90	D142 H122 mm	Ø110mm
ML--DLC30W/35W	AC220-240V	30W 35W	CREE	100LM/W	15° 24° 38° 60°	3000K 4000K 5000K	RA90	D180 H133 mm	Ø145mm
ML-- DLC40W/45W/50W	AC220-240V	40W 45W 50W	CREE	100LM/W	24° 38° 60°	3000K 4000K 5000K	RA90	D230 H155 mm	Ø200mm
ML--ME DLC30W/35W/40W	AC220-240V	30W 35W 40W	CREE	90LM/W	24° 38° 60°	Tailored	RA90	D180 H133 D230 H155 mm	Ø145mm Ø200mm

Model	Watts	Dimmable Type	LED	Lumen (±100lm)	CCT&CRI	Housing type/ Dimension (mm)
ML-DLC6W(PH) ML-DLC9W(PH)	6W 9W	NO-DIM (PHILIPS driver)	CITIZEN	600lm 900lm	3000k 4000k/5000k @ Ra 90	D95 H63mm
ML-DLC12W(PH) ML-DLC15W(PH)	12W 15W			1200lm 1500lm		D110 H86mm D119 H103mm
ML-DLC20W(PH) ML-DLC25W(PH)	20W 25W			2000lm 2500lm		D142 H122mm
ML-DLC30W(PH) ML-DLC35W(PH)	30W 35W			3000lm 3500lm		D180 H133mm
ML-DLC40W(PH) ML-DLC45W(PH) ML-DLC50W(PH)	40W 45W 50W			4000lm 4500lm 5000lm		D180 H133mm D223 H155mm
ML-DLC30W(ME)	30W	NO-DIM (PHILIPS driver)	CITIZEN	2600lm	ME:for meat VE:for vegetable BR:for bread FS:for fish	D180 H133mm
ML-DLC35W(ME)	35W			3100lm		D180 H133mm
ML-DLC40W(ME)	40W			3600lm		D180 H133mm D223 H155mm



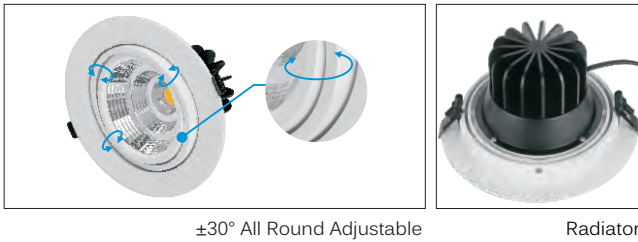
DESCRIPTION

MisterLED 6" single, double, triple head CREE COB LED down lights are ± 30° all round adjustable. The CRI can be 90+, 80+. It can be used at both accent lighting and flood lighting for multiple retail, leisure and commercial applications. Also the lamp body can be IP44, it's a very good product for humid indoor applications.

FEATURES

- Ideal for retrofit traditional 6 inch down light.
- Single Downlight or can be more with double-head and triple-head.
- A wide range of LED-Wattage packages give you the power of choice.
- Appoint the luminaire on the object or area of your choice by adjusting the ±30° pivot axis, common dimming methods are supported.
- Can be suspended or recessed installation.

DETAILS



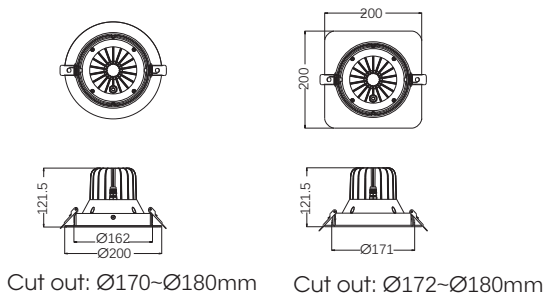
SPECIFICATION

INPUT VOLTAGE 220-240V / 100-120V / 100-277V AC, 50-60Hz
 DIMMABLE Triac, 0-10V, DALI
 BEAM ANGLE 24°, 40°, 60°
 HOUSING COLOR White+black, black
 OPERATING TEMPERATURE RANGE -20--+45°C

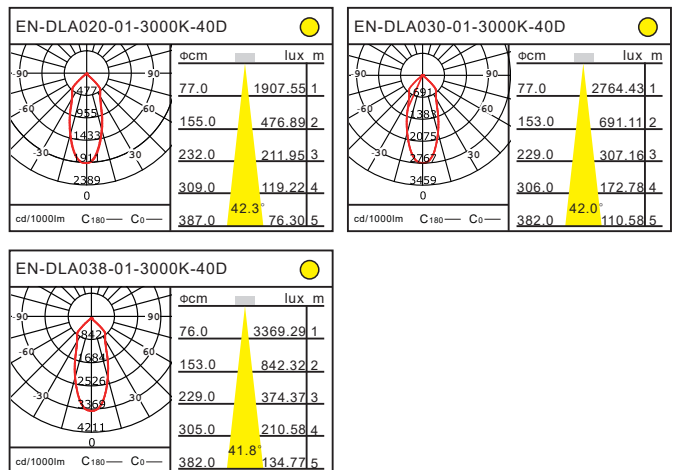
MODEL NUMBER	POWER	COLOR TEMP.	LUMINOUS FLUX(±5%)	LUMINOUS FLUX(lm)
ML-DLA620-01	20W	3000K	1840lm(CRI80+)	1666lm(CRI90+)
ML-DLA820-01	20W	4000K	1940lm(CRI80+)	1756lm(CRI90+)
		5000K	2040lm(CRI80+)	1846lm(CRI90+)
ML-DLA630-01	30W	3000K	2870lm(CRI80+)	2503lm(CRI90+)
ML-DLA830-01	30W	4000K	2920lm(CRI80+)	2638lm(CRI90+)
		5000K	3010lm(CRI80+)	2719lm(CRI90+)
ML-DLA638-01	38W	3000K	3582lm(CRI80+)	3143lm(CRI90+)
ML-DLA838-01	38W	4000K	3634lm(CRI80+)	3380lm(CRI90+)
		5000K	3786lm(CRI80+)	3417lm(CRI90+)

DIMENSION

6inch



LIGHT DISTRIBUTION





Recessed



Suspending

6inch



MODEL NUMBER	POWER	COLOR TEMP.	LUMINOUS FLUX(±5%)	LUMINOUS FLUX(lm)
		3000K	1840lm x2(CRI80+)	1666lm x2(CRI90+)
ML-DLA620-02	20Wx2	4000K	1940lm x2(CRI80+)	1756lm x2(CRI90+)
ML-DLA820-02	20Wx2	5000K	2040m x2(CRI80+)	1846lm x2(CRI90+)
		3000K	2870lm x2(CRI80+)	2503lm x2(CRI90+)
ML-DLA630-02	30Wx2	4000K	2920lm x2(CRI80+)	2638lm x2(CRI90+)
ML-DLA830-02	30Wx2	5000K	3010lm x2(CRI80+)	2719lm x2(CRI90+)
		3000K	3582lm x2(CRI80+)	3143lm x2(CRI90+)
ML-DLA638-02	38Wx2	4000K	3634lm x2(CRI80+)	3380lm x2(CRI90+)
ML-DLA838-02	38Wx2	5000K	3786lm x2(CRI80+)	3417lm x2(CRI90+)

MODEL NUMBER	POWER	COLOR TEMP.	LUMINOUS FLUX(±5%)	LUMINOUS FLUX(lm)
		3000K	1840lm x3(CRI80+)	1666lm x3(CRI90+)
ML-DLA620-03	20Wx3	4000K	1940lm x3(CRI80+)	1756lm x3(CRI90+)
ML-DLA820-03	20Wx3	5000K	2040m x3(CRI80+)	1846lm x3(CRI90+)
		3000K	2870lm x3(CRI80+)	2503lm x3(CRI90+)
ML-DLA630-03	30Wx3	4000K	2920lm x3(CRI80+)	2638lm x3(CRI90+)
ML-DLA830-03	30Wx3	5000K	3010lm x3(CRI80+)	2719lm x3(CRI90+)
		3000K	3582lm x3(CRI80+)	3143lm x3(CRI90+)
ML-DLA638-03	38Wx3	4000K	3634lm x3(CRI80+)	3380lm x3(CRI90+)
ML-DLA838-03	38Wx3	5000K	3786lm x3(CRI80+)	3417lm x3(CRI90+)

DLT Series Rectangle SMD/COB LED Downlight

Description:

DLT rectangle COB downlight with 2 pcs COB ,which til-table and rota-table, stack-effect heat sink which is sufficient of cooling ensure the long lifespan of the light , cutout free to give you a more elegant and nicer ceiling.

Application:

- Shopping mall,jewelry shop and fashion store lighting.
- Art gallery,furniture,museum and showroom lighting .
- Gym, hotel, hospital and stage lighting.
- Food Lighting (Meat Fruit Vegetable Bread etc.)



Information:

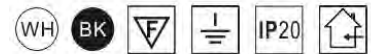
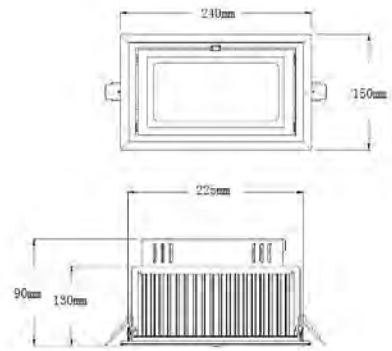
Features:

- Lighting Source: Original **CREE /Citizen COB LED**
- Available in 85+,90+.
- Dimming methods: Non dimmable or dimmable
- High Purified aluminum heat sink
- Strongly light up an object from far or high distance,Life time up to 50000h
- Unique and compact design with perfect thermal management.



Specification:

- Power supply : Philips/Lifud
- Power factor: >0.93.
- Color Temp.(Color) : 2700K 3000K 4000K 5000K
- Housing material: aluminum.
- Housing color: White/Black
- Working environment temperature: -20oc ~ +45oc.
- Lamp Certificates: CE ROHS SAA
- Driver Certificates : TUV CB UL CE ROHS SAA



Model number	Electrical parameters			Optical parameters				Physical parameter	
	Input voltage(V)	Power (w)	LED Chip	Luminous flux (lm) (±5%)	Beam angle(o)	CCT (K)	CRI	Size (mm)	Cutout(mm)
ML-DLT40WSQ	AC220-240V	40W	SMD	4000LM	120°	3000K 4000K 5000K	85+	L240 W150 H90mm	L225*130mm
ML-DLT40WSQ Food display	AC220-240V	40W	Tailor-made COB	Customized	120°	Meat Vegetable Fruit Bread Seafood	Customized	L240 W150 H90mm	L225*130mm

SPO Series LED Spot Light

Description:

OP-SPO series, Gu10 led spot light, Very low energy consumption. The use of light quality die-casting environmentally friendly aluminum, with good thermal conductivity, efficient cooling with air flow. High temperature resistance, corrosion resistance.



Application:

- Shopping mall, jewelry shop and fashion store lighting.
- Commercial show windows and bars, airport, subway, cloverleaf junction and architecture field.
- Food Lighting (Meat Fruit Vegetable Bread etc.)



Product benefits

- Very low energy consumption
- Extremely long lifetime
- Energy savings
- Maintenance savings
- instant light-up
- Excellent light quality
- No UV or IR radiation
- Environmentally-friendly: no mercury



Products features

- Lighting Source: 1LED-COB, customized
- Life time up to 50000hrs
- Available in 85+.
- Base: Gu10
- Color Temp.(Color) : 3000K-6000K, customized for meat
- Housing material: Aluminum alloy
- Housing color: White

Specification:

Model	Input voltage(V)	Power (w)	LED Chip	Luminous flux (lm) (±20lm)	Beam angle(o)	CCT (K)	CRI	Size (mm)
ML-SPO 6W	AC220-240V	6W	COB	500LM	38	3000k/4000k 5000k	80+	D50*H55mm
ML-SPO 9W	AC220-240V	6W	Meat COB (customized)	540LM	15/24 38/40	Customized for meat	80+	D50*H60mm
ML-SPO 9W	AC220-240V	9W	Meat COB (customized)	860LM	15/24 38/40	Customized for meat	80+	D50*H90mm

Ip44 Rigid Bar Light (Magnet Rotatable supporting clips)

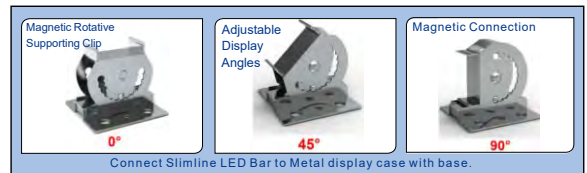


IDEAL FOR

Service&Multi-Deck: Meat, Beverage, Bakery, Deli, Dairy, Seafood, packed food, Prepared&Frozen foods, Floral, Salad Bars, Shelves, furniture, cabinet, display case, KTV, Hotel, the edge of stairs and city lighting decoration areas etc.



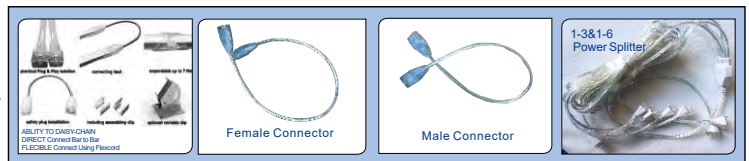
MOUNTING OPTIONS



SPECIFICATION

Ip44 Also available assemble in refrigerators.
Smart design with Magnet Rotative Clips. Adjustable display Angles.
CRI>85 Power Factor>0.9
1-3 and 1-6 Power splitter.
Male and Female Head for more convenient connection.
Input Voltage: 12V or 24V. Dimmable
Warranty: 3 years

CONNECTING OPTIONS



size	Model Number	Watts	Type	Length (mm)	Length (in)	Lumens	Lumens per Watt	Color
1ft	RB-260-IP40	4	Canopy	260	10	310	83	Platinum
2ft	RB-560-IP40	9	Canopy	600	24	644	80	Platinum
3ft	RB-860-IP40	12	Canopy	900	36	1140	80	Platinum
4ft	RB-1160-IP40	18	Canopy	1200	48	1500	85	Platinum
5ft	RB-1460-IP40	22	Canopy	1500	60	1880	95	Platinum

**Special tailored meat color, golden color for Bakery, customized 3000K for Deli, 4000K for vegetables and fruits,5000K for beverage and 6500K for Dairy.



Model number	Electrical parameters			Optical parameters				parameter
	Input voltage(V)	Power (w)	LED Chip	Luminous flux(lm)	Beam angle(o)	CCT (K)	CRI	Size (mm)
RB-260+CCT	12V/24V	4W	EPISTAR	83LM/W	100°	2700k 3000K 4000K 5000K 6500K Meat	RA90	260mm
RB-560+CCT	12V/24V	9W	EPISTAR	80LM/W	100°	2700k 3000K 4000K 5000K 6500K Meat	RA90	560mm
RB-860+CCT	12V/24V	12W	EPISTAR	80LM/W	100°	2700k 3000K 4000K 5000K 6500K Meat	RA90	860mm
RB-1160+CCT	24V/24V	18W	EPISTAR	85LM/W	100°	2700k 3000K 4000K 5000K 6500K Meat	RA90	1160mm
RB-1460+CCT	12V/24V	22W	EPISTAR	95LM/W	100°	2700k 3000K 4000K 5000K 6500K Meat	RA90	1460mm

Non-Dim Rigidbar Drivers



Dimmable Rigidbar Drivers



Model number	Electrical parameters		
	Input voltage(V)	Output voltage(V)	Brand
RBD20W	220-240V	12V/24V	Meanwell
RBD60W	220-240V	12V/24V	Meanwell
RBD100W	220-240V	12V/24V	Meanwell
RBD150W	220-240V	24V/24V	Meanwell

Model number	Electrical parameters		
	Input voltage(V)	Output voltage(V)	Brand
RBD60WDIM	220-240V	12V/24V	Meanwell
RBD100WDIM	220-240V	12V/24V	Meanwell
RBD150WDIM	220-240V	12V/24V	Meanwell
RBD240WDIM	220-240V	24V/24V	Meanwell

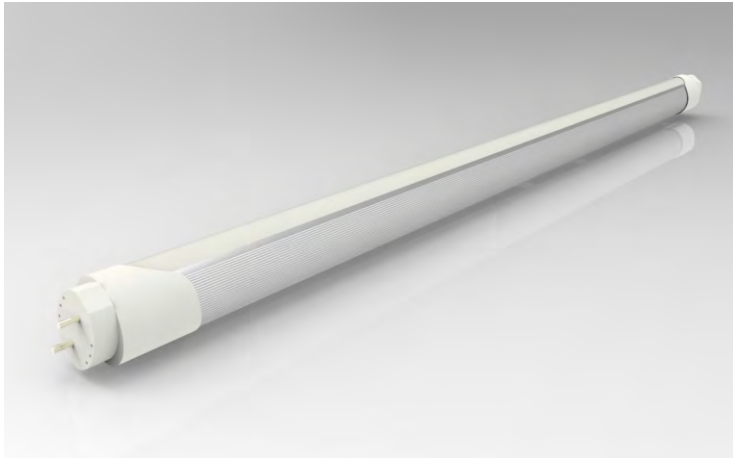
Ip40 T8 LED Tube Light



T8 Meat Tube

IDEAL FOR

Service & Multi Deck, Display Lighting: Meat, Seafood, Dairy, Deli, Prepared&Frozen Foods, Bakery, Salad Bars&Ice Cream, Shelves lighting. Office, Factory, Shopping mall, School, Hotel etc.



SPECIFICATIONS

- G13 Bi-Pin Rotatable & Locking End-Caps
- Plug-In Play (No wiring changes)
- Replaces T8 Fluorescent Tubes
- Double End wiring connection Input(Polar)-Plug-In Play
- Single End wiring connection Input(Polar)=Direct Wired 120 degree or 180 degree Beam Angle
- Available works with T8 Electronic Ballast (American)
- Available works with T8 Pre-Heat Ballast (European) High Brightness / 85 CRI
- UP to 75% Energy Savings
- Average 50,000 hours Life Span

size	Model Number	Watts	Type	Length (mm)	Length (in)	Lumens	Lumens per Watt	Color
2ft	T8-600-IP40	9	G13	600	24	644	80	Platinum
3ft	T8-900-IP40	14	G13	900	36	1140	80	Platinum
4ft	T8-1200-IP40	18	G13	1200	48	1500	85	Platinum
5ft	T8-1500-IP40	22	G13	1500	60	1880	95	Platinum

T5 LED Tube Light

160lm/W



RoHS



Product Specification

Luminance Efficacy: Frosted Cover:160lm/W
Clear Cover:170lm/W

LED Type: 2835 LED

Input Voltage: AC100-240V

CCT:3000K 4000K 5000K 6000K

CRI:>80

PF:>0.9

Beam Angle:140°

Driver Type: Internal Driver

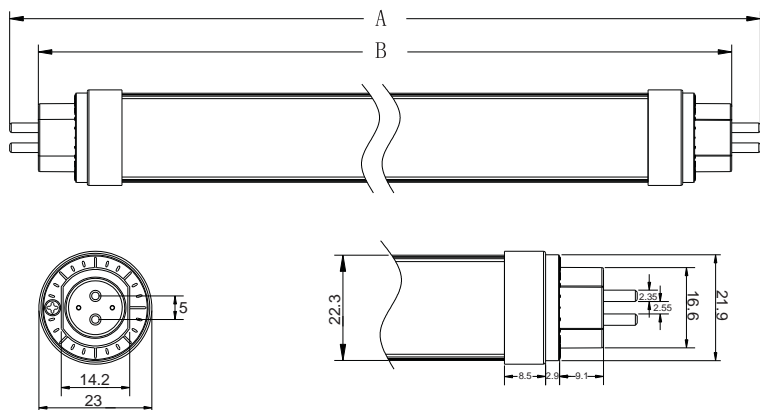
Working Temperature: -20°C-48°C

Product Feature

- Pretty and elegant appearance) patented product.
- Directly install on the existing T5 fixture.
- Colorful metal rings available)Blue)Green)Silver) Red and Gold.
- G5 fixed or rotating end cap is available.
- 6063 Aluminum housing)polycarbonate cover) long lifespan.
- ODM/OEM service available) Laser print customer LOGO and customer exclusive label.
- Mainly used in factory)supermarket)carpark) hospital and school.



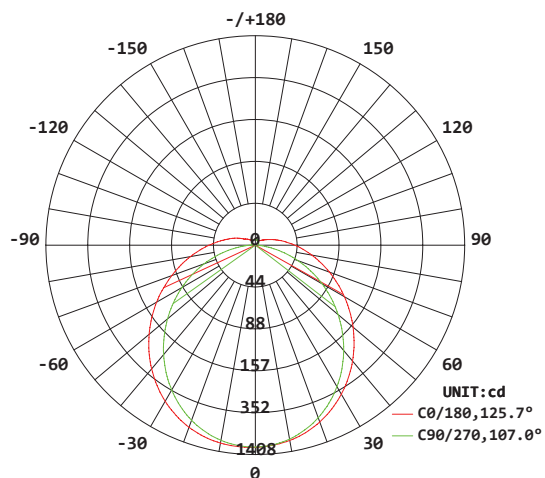
Specification



	2feet 548 Dimension	3feet 848 Dimension	4feet 1148 Dimension	5feet 1448 Dimension
A:	562mm	862mm	1162mm	1462mm
B:	548mm	848mm	1148mm	1448mm

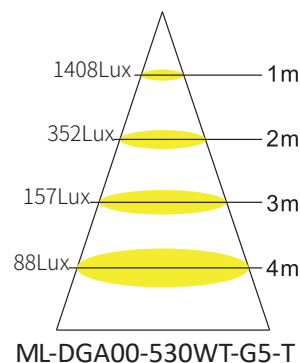
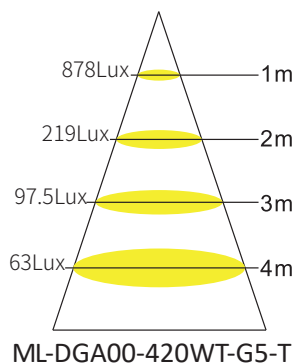
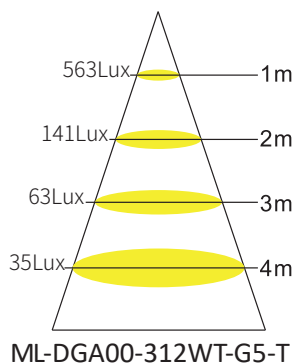
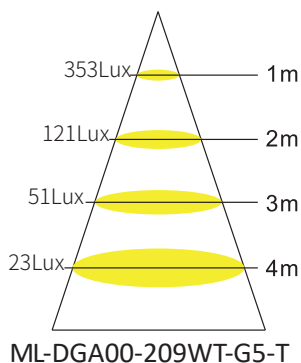
Beam angle

LUMINOUS INTENSITY DISTRIBUTION DIAGRAM



AVERAGE BEAM ANGLE(50%):116.4 DEG
SL-DGA00-530WT-G5-T

Illumination Distribution Drawing



Product Model

Model No.	Length	Power	Lumen(lm)	LED Qty	Size(mm)	Carton Size(cm)	N.W	G.W/25PCS
ML-DGA00-206WT-G5-T	2ft	6W	960	72pcs	Φ22*L548	L60*W19*H12	5.3kg	5.6kg
ML-DGA00-209WT-G5-T	2ft	9W	1440	72pcs	Φ22*L548	L60*W19*H12	5.3kg	5.6kg
ML-DGA00-312WT-G5-T	3ft	12W	1920	96pcs	Φ22*L848	L90*W19*H12	7.1kg	7.4kg
ML-DGA00-412WT-G5-T	4ft	12W	1920	144pcs	Φ22*L1148	L120*W19*H12	10.3kg	10.6kg
ML-DGA00-418WT-G5-T	4ft	18W	2880	144pcs	Φ22*L1148	L120*W19*H12	10.3kg	10.6kg
ML-DGA00-420WT-G5-T	4ft	20W	3200	144pcs	Φ22*L1148	L120*W19*H12	10.3kg	10.6kg
ML-DGA00-425WT-G5-T	4ft	25W	4000	168pcs	Φ22*L1148	L120*W19*H12	10.3kg	10.6kg
ML-DGA00-520WT-G5-T	5ft	20W	3200	192pcs	Φ22*L1448	L150*W19*H12	11.7kg	12.0kg
ML-DGA00-525WT-G5-T	5ft	25W	4000	192pcs	Φ22*L1448	L150*W19*H12	11.9kg	12.2kg
ML-DGA00-530WT-G5-T	5ft	30W	4800	216pcs	Φ22*L1448	L150*W19*H12	12.6kg	12.9kg
ML-DGA00-535WT-G5-T	5ft	35W	5400	216pcs	Φ22*L1448	L150*W19*H12	12.6kg	12.9kg



T8 LED Tube Light

160lm/W



RoHS



Product Specification

Luminance Efficacy: Frosted Cover:160lm/W
Clear Cover:170lm/W

LED Type: 2835 LED,Epistar

Input Voltage: AC100-240V

CCT:3000K 4000K 5000K 6000K

CRI:>80

PF:>0.95

Beam Angle:140°

Driver Type: Internal Driver

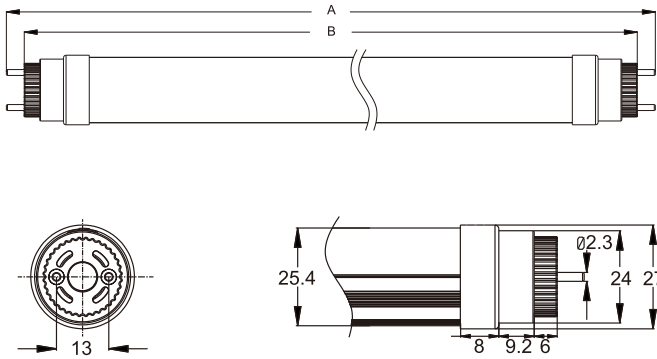
Working Temperature: -20°C-48°C

Product Feature

- Pretty and elegant appearance,G13 fixed or rotating end cap is available.
- Colorful metal rings available,Blue,Green,Silver, Red and Gold.
- ODM/OEM service available,Laser print customer LOGO and customer exclusive lable.
- 6063 Aluminum housing,polycarbonate cover, long lifespan.
- Professional design of optics,no shadow,no light spot.
- Mainly used in factory,supermarket,carpark, hospital and school.



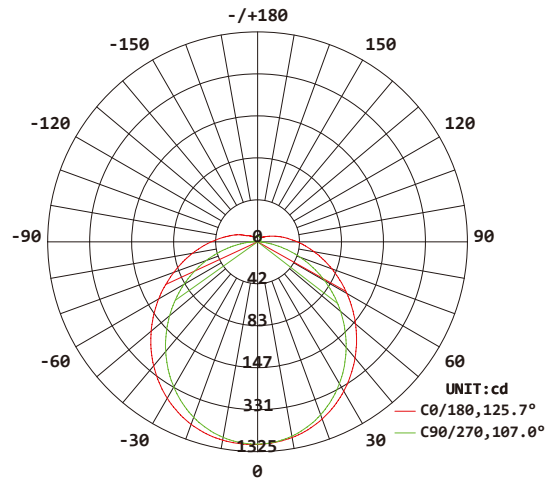
Specification



	2feet 588 Dimension	3feet 892 Dimension	4feet 1198 Dimension	5feet 1498 Dimension
A:	602mm	906mm	1213mm	513mm
B:	588mm	892mm	1198mm	1498mm

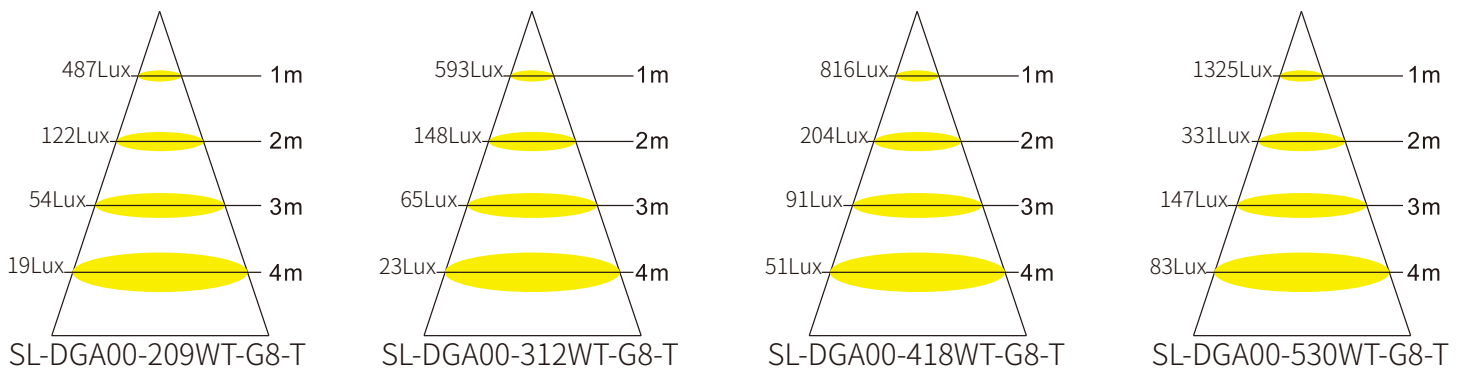
Beam angle

LUMINOUS INTENSITY DISTRIBUTION DIAGRAM



AVERAGE BEAM ANGLE(50%):116.4 DEG
ML-DGA00-530WT-G8-T

Illumination Distribution Drawing



Product Model

Model No.	Length	Power	Lumen(lm)	LED Qty	Size(mm)	Carton Size(cm)	N.W	G.W/25PCS
ML-DGA00-206WT-G8-T	2ft	6W	960	72pcs	Φ26*L588	L66*W22*H22	6.4kg	6.7kg
ML-DGA00-209WT-G8-T	2ft	9W	1440	72pcs	Φ26*L588	L66*W22*H22	6.4kg	6.7kg
ML-DGA00-312WT-G8-T	3ft	12W	1920	96pcs	Φ26*L892	L95*W22*H22	10.3kg	10.6kg
ML-DGA00-412WT-G8-T	4ft	12W	1920	144pcs	Φ26*L1198	L125*W22*H22	10.3kg	10.6kg
ML-DGA00-418WT-G8-T	4ft	18W	2880	144pcs	Φ26*L1198	L125*W22*H22	12.6kg	12.9kg
ML-DGA00-420WT-G8-T	4ft	20W	3200	144pcs	Φ26*L1198	L125*W22*H22	12.6kg	12.9kg
ML-DGA00-520WT-G8-T	5ft	20W	3200	192pcs	Φ26*L1498	L156*W22*H22	14.6kg	14.9kg
ML-DGA00-525WT-G8-T	5ft	25W	4000	192pcs	Φ26*L1498	L156*W22*H22	14.6kg	14.9kg
ML-DGA00-530WT-G8-T	5ft	30W	4800	216pcs	Φ26*L1498	L156*W22*H22	14.7kg	15.0kg

*Remarks: 3000K,4000K available,Only change "W" to "N", "L" in Model No.



Nano T8 LED Tube

160lm/W



Product Specification

V0 fire-proof materials

Efficacy:160lm/W

LED Type: Epistar SMD2835

Input Voltage: AC100-240V

CCT:2800-3300K 3800-4300 5800-6400K

CRI:>80

PF:>0.9

Beam Angle:330°

Guarranty: 2 year

Life Span: 30 000hours

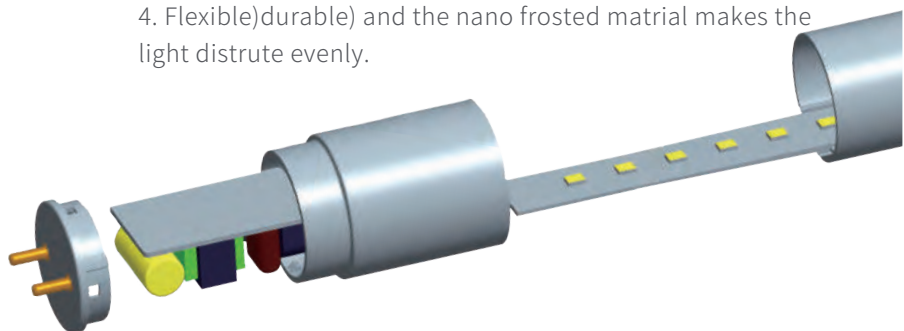
LED Driver: Internal Driver

Working Temperature: -20 ·c- 48 ·c

Characteristics

Independent Driver Space

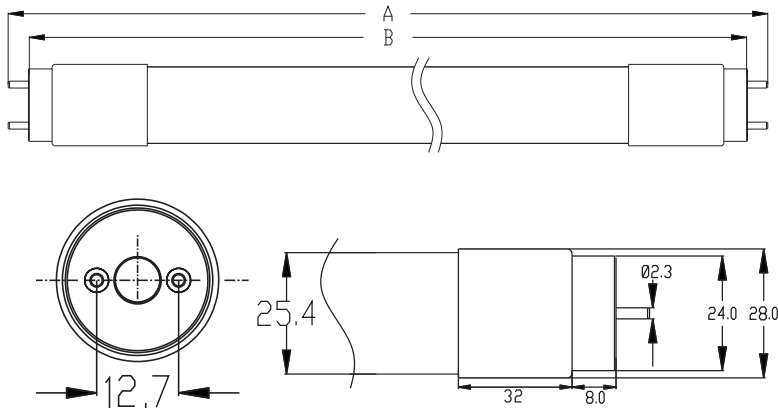
- 1.The fire-proof level of the end cap and nanoplastic housing is V0.
- 2.The driver is built in the end cap)indepent and sperated from the nanoplastic housing and PCB.and the cap is V0 fire proof)It 's a cage to pack the driver.
- 3.The tube is light and with big beam angle 330
4. Flexible)durable) and the nano frosted matrial makes the light distrute evenly.



CE

Mister LED

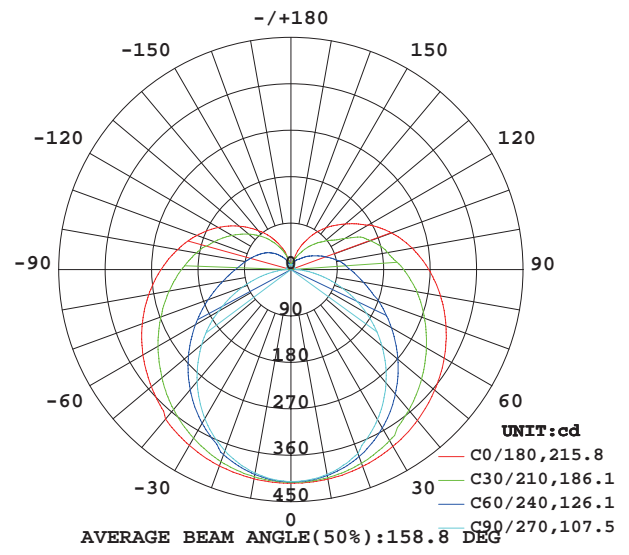
Specification



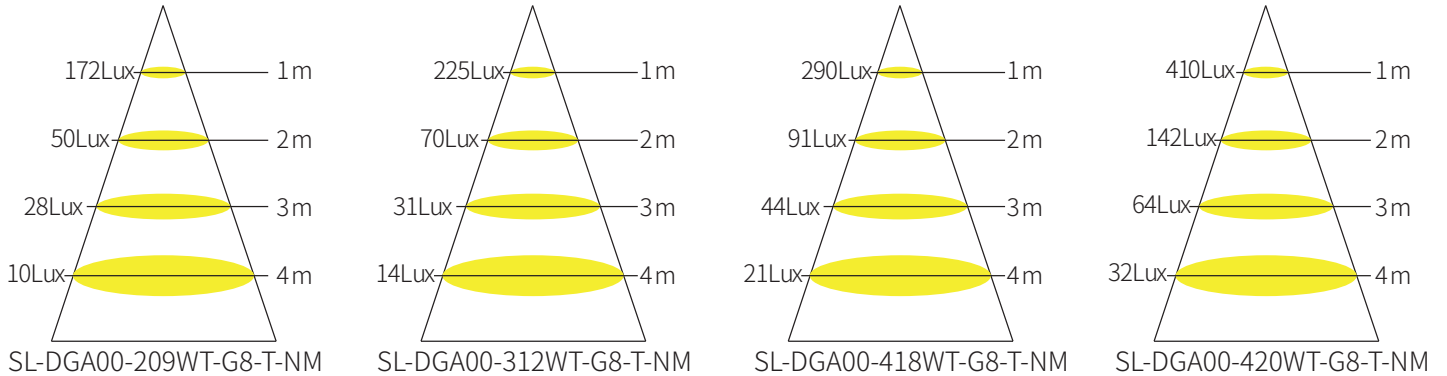
	2feet 588 Dimension	3feet 892 Dimension	4feet 1198 Dimension	5feet 1498 Dimension
A:	602mm	906mm	1213mm	1513mm
B:	588mm	892mm	1198mm	1498mm

Beam angle

LUMINOUS INTENSITY DISTRIBUTION DIAGRAM



Illumination Distribution Drawing



Product Model

Model No.	Length	Power	Lumen(lm)	LED Qty	Size(mm)	Carton Size(cm)	N.W	G.W/25PCS
SL-DGA00-209WT-G8-T-NM	2ft	9W	1440	48pcs	Φ26*L588	L66*W22*H22	6.2kg	6.5kg
SL-DGA00-312WT-G8-T-NM	3ft	12W	1920	72pcs	Φ26*L898	L96*W22*H22	6.7kg	7kg
SL-DGA00-418WT-G8-T-NM	4ft	18W	2880	144pcs	Φ26*L1198	L126*W22*H22	7.5kg	7.8kg
SL-DGA00-420WT-G8-T-NM	4ft	20W	3200	144pcs	Φ26*L1198	L126*W22*H22	7.5kg	7.8kg
SL-DGA00-524WT-G8-T-NM	5ft	24W	3840	180pcs	Φ26*L1498	L156*W22*H22	9.3kg	9.6kg

*Remarks: 3000K,4000K available,Only change "W" to "N", "L" in Model No.



PRODUCTLIST T8 & T5 LEDTube

Model number	Electrical parameters			Optical parameters				parameter
	Input voltage(V)	Power (w)	LED Chip	Luminous flux(lm)	Beam angle(o)	CCT (K)	CRI	Size (mm)
209WT5/8	AC100/240V	9W	EPISTAR	160LM/W	140°	3000K 4000K 5000K 6000K	RA90	600mm
312WT5/8	AC100/240V	12W	EPISTAR	160LM/W	140°	3000K 4000K 5000K 6000K	RA90	900mm
418/420WT5/8	AC100/240V	18/20W	EPISTAR	160LM/W	140°	3000K 4000K 5000K 6000K	RA90	1200mm
525/530WT5/8	AC100/240V	25/30W	EPISTAR	160LM/W	140°	3000K 4000K 5000K 6000K	RA90	1500mm

PRODUCTLIST Nano Eco Tube

Model number	Electrical parameters			Optical parameters				parameter
	Input voltage(V)	Power (w)	LED Chip	Luminous flux(lm)	Beam angle(o)	CCT (K)	CRI	Size (mm)
209WTN	AC100/240V	9W	EPISTAR	160LM/W	330°	3000K 4000K 5000K 6000K	RA90	600mm
312WTN	AC100/240V	12W	EPISTAR	160LM/W	330°	3000K 4000K 5000K 6000K	RA90	900mm
418/420WTN	AC100/240V	18/20W	EPISTAR	160LM/W	330°	3000K 4000K 5000K 6000K	RA90	1200mm
525WTN	AC100/240V	25W	EPISTAR	160LM/W	330°	3000K 4000K 5000K 6000K	RA90	1500mm

LED PANEL LIGHTS

 **Mister LED**

5 YEAR
GUARANTEE
CE RoHS



Features

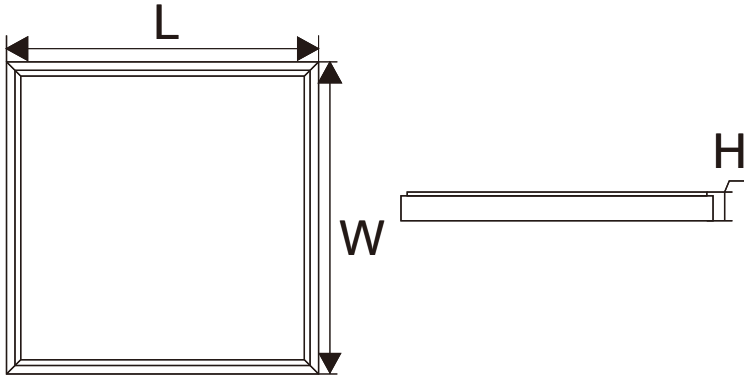
- ★ Using Hi-quality, Hi-brightness LED as lighting source, high efficiency and energy-saving, free from glare and flicker, and has average luminous surface.
- ★ Aluminum heat-sink base and No Glare
- ★ Long-lifespan on average over 50 thousand hours is more than 10 times of traditional lamps.
- ★ Adopting lampshade materials with more than 90% light transmittance, and aluminum aluminum alloy of high thermal conduction as lamp shell.
- ★ Wide range of input voltage: AC200-240V.
- ★ New high efficiency constant current driver. Philips.
- ★ Instant start, no flickering, no humming.
- ★ Special circuit design, four sides into the light, resorted to light more efficiently and evenly.
- ★ No electrical wave, conforming to CE.
- ★ Green environmental protection, lead-free material, conforming to ROHS.
- ★ No RF interference.
- ★ Decrease the maintenance fee, can be used for a long time without changing for new one.

Applications:

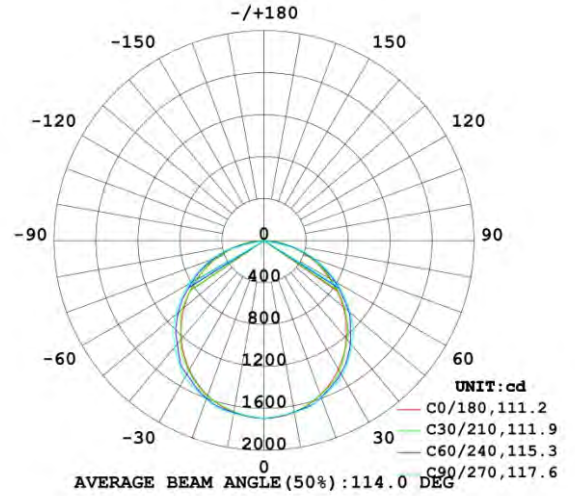
- ★ Hotels
- ★ Factories & Offices
- ★ Commercial Purposes
- ★ Residential/ Institution Buildings
- ★ Schools, Colleges & Universities
- ★ Hospitals
- ★ Other Lighting



PRODUCT SPECIFICATION



Light Distribution Diagram



	PL3030	PL3060	PL3012	PL6060	PL6012	PL6262
H:	9.5MM					
W:	295MM	295MM	295MM	595MM	595MM	620MM
L:	295MM	595MM	1195MM	595MM	1195MM	620MM

Technical Data

Item NO:	ML-PLE303016	ML-PLE306021	ML-PLE301227/36	ML-PLE606027/36	ML-PLE601250/64	ML-PLE626227/36
Power(W)	16W	21W	36W-40W	36W-40W	50W/64W	27W/36W-40W
Size	300*300*10MM	300*600*10MM	300*1200*10MM	600*600*10MM	600*1200*10MM	620*620*10MM
Lighting Effect	120LM/W					
Carton(mm) 5PCS	L395*W340*H200	L695*W200*H345	L1295*W235*H345	L680*W200*H645	L1295*W190*H705	L705*W200*H670

Item NO:	ML-PLE301224/36	ML-PLE606024/36
Power(W)	25W	25W
Size	300*1200*10MM	600*600*10MM
Lighting Effect	150LM/W	
Carton(mm) 5PCS	L1295*W235*H345	L680*W200*H645

LED Linear Light 160lm/W

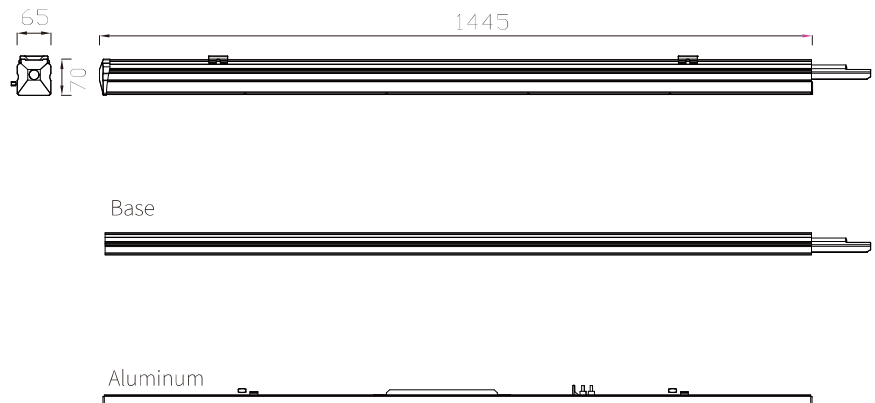


CE RoHS

Product Specification

Luminance Efficacy: Clear Cover:160lm/W
 LED Type: 2835 LED)Epistar/Philips
 Input Voltage: AC100-240V
 CCT:3000K 4000K 5000K 6000K
 CRI:>80
 PF:>0.95
 Beam Angle:60°/90°/120°
 Driver Brand: Isolated Driver
 Working Temperature: -20°C-48°C

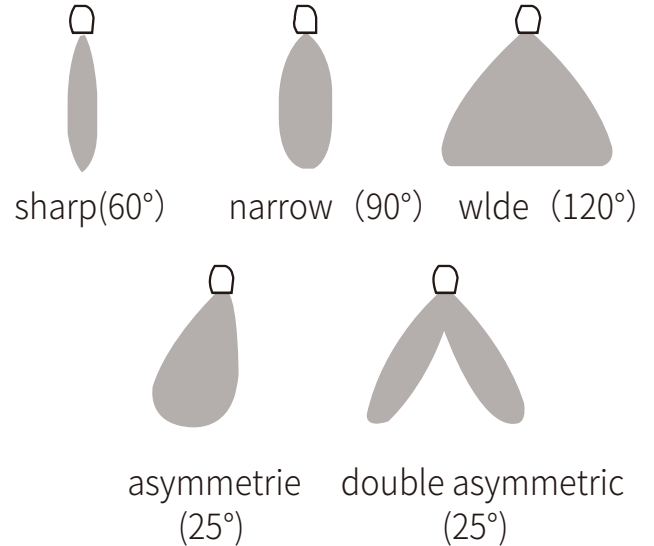
Structure



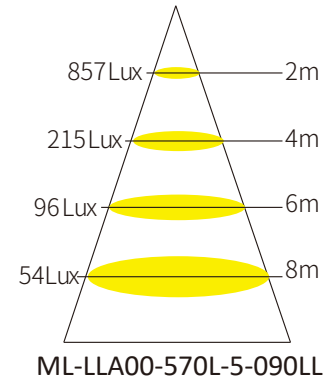
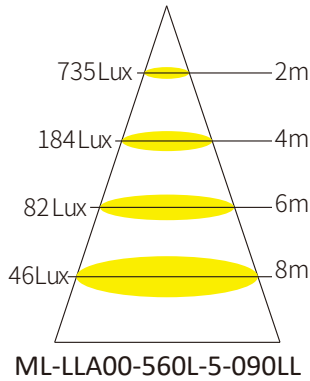
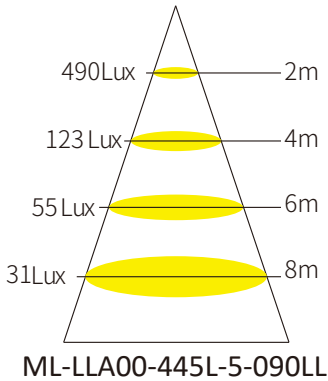
Node Connector



Different diffuser for different distribution



Illumination Distribution Drawing



Trunking Rail

Model No.	Size(mm)	Carton Size(cm) N/W	GW/4PCS
ML-LL-4-5WH-TR	L1169*W75*H75	L1200*W90*H90	1.5Kg 7.6kg
ML-LL-5-5WH-TR	L1445*W75*H75	L1500*W90*H90	2.9Kg 12.9kg

Product Model

Model No.	Color Temp*	Power	Lumen(lm)	LED Qty	Size(mm)	Carton Size(cm)	N.W	G.W/4PCS
ML-LLA00-445L-5-090LL	6000K	45W	7200	132pcs	L1265*W75*H75	L1310*W90*H90	1.8Kg	8.8kg
ML-LLA00-445L-5-090LL-D	4000K	45W	7200	132pcs	L1265*W75*H75	L1310*W90*H90	1.8Kg	8.8kg
ML-LLA00-445L-5-090LL-DL	3000K	45W	7200	132pcs	L1265*W75*H75	L1310*W90*H90	1.8Kg	8.8kg
ML-LLA00-560L-5-090LL	6000K	60W	9600	165pcs	L1565*W75*H75	L1610*W90*H90	3.3Kg	14.5kg
ML-LLA00-560L-5-090LL-D	4000K	60W	9600	165pcs	L1565*W75*H75	L1610*W90*H90	3.3Kg	14.5kg
ML-LLA00-572L-5-090LL-DL	6000K	72W	11520	165pcs	L1565*W75*H75	L1610*W90*H90	3.3Kg	14.5kg



LED Tri-proof 160lm/W



CE RoHS

Product Specification

Luminance Efficacy: Frosted Cover:160lm/W
LED Type: 2835 LED
Input Voltage: AC200-240V
CCT:3000K 4000K 5000K 6000K
CRI:>80
PF:>0.95
Beam Angle:120°
Driver Type: Internal Driver
Working Temperature: -20°C-48°C

Product Feature

- High energy efficiency light source .
- Integrated streamline tube structure makes the light more even and soft.
- IP66 Waterproof and dustproof.
- Suspended and surface-mounted installation optional. Serial connection available
- Application indoors and outdoors like warehouse)swimming pool)supermarket)etc.

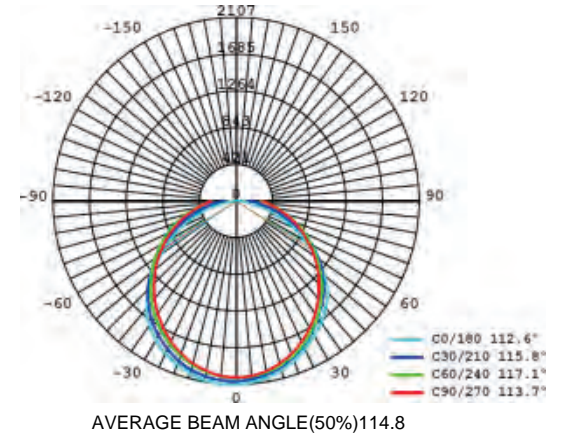


Dimensions (mm)



Product	Power (W)	Lumen (lm)	L (mm)	W (mm)	H (mm)
ML-SFH1-18L06	18	2880	600	75	65
MLSFH1-30L12	30	4800	1200	75	65
ML-SFH1-50L15	50	8000	1500	75	65

Beam angle

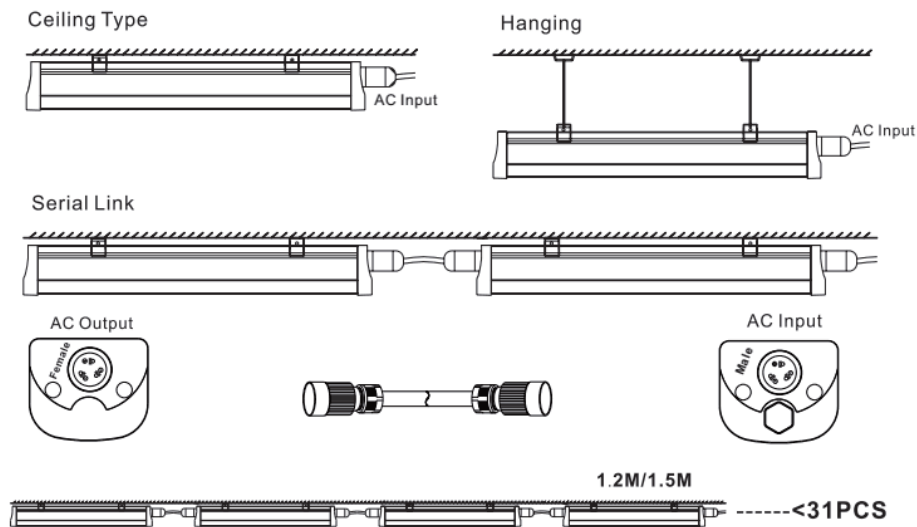


Wiring diagram

Cautions:

Before installation, be sure to cut off electricity to avoid electric shock.

This is one end wiring LED Tri-proof light with build-in driver. Powered by the voltage labeled on the LED Tri-proof light, no need to add other drivers.



Product Model

Model No.	Length	Power	Lumen(lm)	LED Qty	Size(mm)	Carton Size(cm)	N.W	G.W
MLSFH1-18L06	0.6m	18W	2880	160pcs	L600*W75*H65	L68*42*30	0.85kg	19kg/20PCS
ML-SFH1-30L12	1.2m	30W	4800	232pcs	L1200*W75*H65	L128*42*16	1.5kg	18kg/10PCS
ML-SFH1-50L15	1.5m	50W	8000	400pcs	L1500*W75*H65	L158*42*16	1.8kg	22kg/10PCS
ML-SFH2-18L06	0.6m	18W	2880	160pcs	L600*W75*H65	L68*42*30	0.85kg	19kg/20PCS
ML-SFH2-30L12	1.2m	30W	4800	232pcs	L1200*W75*H65	L128*42*16	1.5kg	18kg/10PCS
ML-SFH2-50L15	1.5m	50W	8000	400pcs	L1500*W75*H65	L158*42*16	1.8kg	22kg/10PCS



LED High Bay Light
UFO03 70W-240W

190LM/W

SPECIFICATIONS



5 Years Warranty



CE RoHS



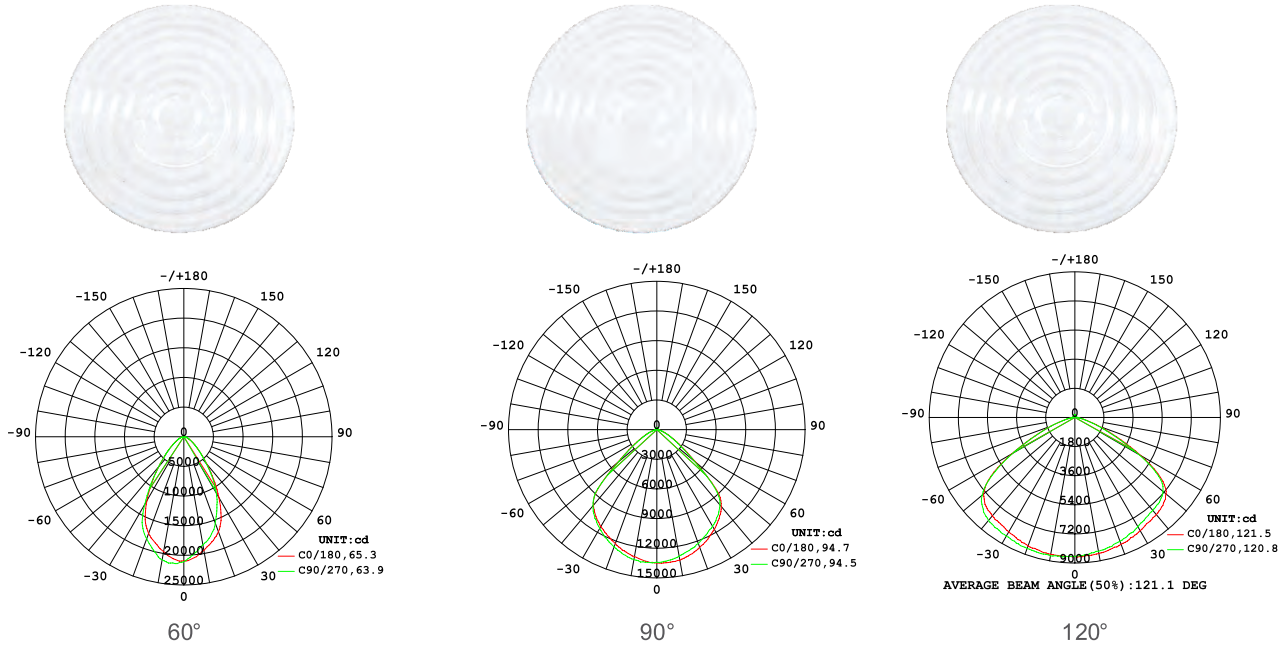
Specification

Model	ML-UFOA00-70W	ML-UFOA00-90W	ML-UFOA00-110W	ML-UFOA00-150W	ML-UFOA00-200W	ML-UFOA00-240W
PF	>0.95					
Input Voltage (V)	100-277VAC					
CRI	Ra70	Ra80	Ra70	Ra80	Ra70	Ra80
Efficacy (lm/W) $\pm 5\%$	190	175	190	175	190	175
Lumen output $\pm 5\%$	13300	12250	17100	15750	20900	19250
CCT (K)	4000K/5000K/5700K/6000K					
Dimming	Non-Dimming (Default) / 1-10V Dimming / Dali Dimming / Zigbee wireless Dimming					
Intelligent Control	Motion Sensor / Daylight Sensor / PIR Sensor					
Beam angle	60°/90°/120°					
Material	Body Aluminum+ PC Lens					
Operating Temperature	-40°C to 50°C					
Humidity	10% - 90%					
Installation	Hook Mounted, Bracket Mounted					
LED Type	2835 / 3030					
Power Supply	Moso / MW					
Surge Protection	4kV line-line, 6kV line-earth					
Certification	CCC / CQC / CE / UL / RCM / RoHS / ERP / SAA / DLC					
IP Rate	IP65					
Warranty	5 Years					

Packing

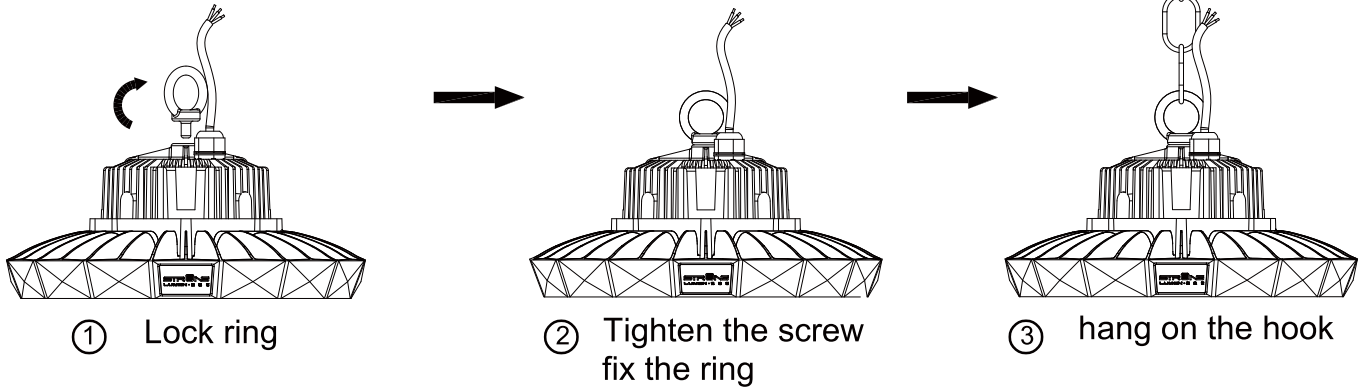
Model No.	Power	Size(mm)	Carton Size(mm)	G.W/1PCS ± 0.2 KG
ML-UFOA00-70W	70W	$\phi 289 \times H176$	L320xW320xH185	3.2KG
ML-UFOA0090W	90W	$\phi 289 \times H176$	L320xW320xH185	3.2KG
ML-UFOA00-110W	110W	$\phi 289 \times H176$	L320xW320xH185	3.2KG
ML-UFOA00-150W	150W	$\phi 325 \times H187$	L380xW380xH185	4.5KG
ML-UFOA00-200W	200W	$\phi 325 \times H187$	L380xW380xH185	4.5KG
ML-UFOA00-240W	240W	$\phi 325 \times H187$	L380xW380xH185	4.5KG

Beam angle



Installation

1. Hook mounted



2. Bracket mounted

